

- LEGEND**
- Reinforced Concrete
 - Lean Concrete
 - Solid Brick Masonry
 - Hollow Brick Masonry
 - Ventilation Opening

- Room Number
- Floor Type 1
- Finished Floor Level
- Window 5
- Door 2 - Left
- Door 2 - Right
- Door Window

AS-BUILT DRAWING



SCALE A
±0.000=9.60m ABOVE SEA LEVEL

| DOCUMENT No. | DESCRIPTION |
|-------------------|-------------|
| REFERENCES | |

| No. | CHECK | APPR | DATE | DESCRIPTION |
|------------------|-------|------|------|-------------|
| REVISIONS | | | | |

**SONJA KILL
MEMORIAL HOSPITAL FOR CHILDREN
KAMPOT CAMBODIA**

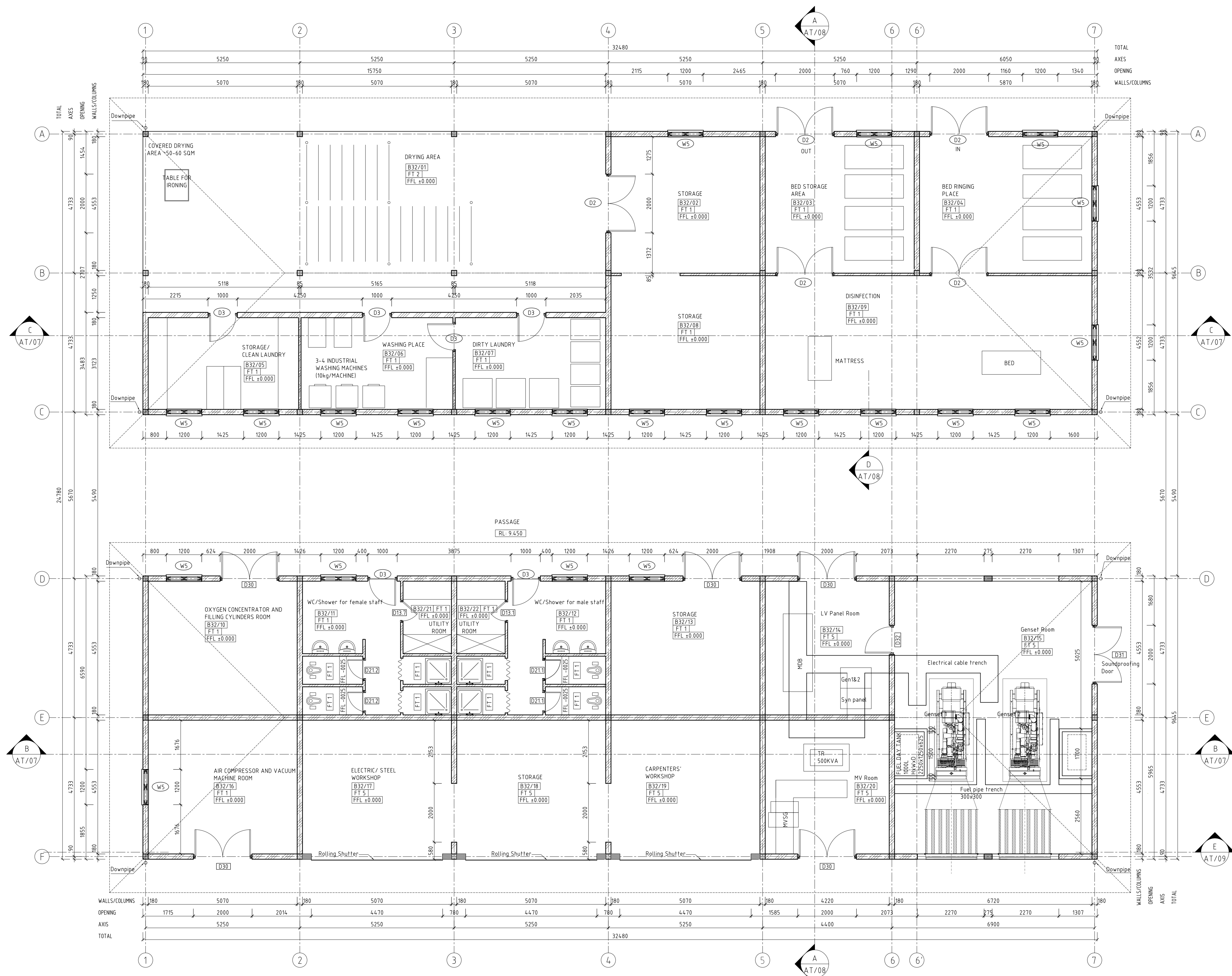
Architect
Hans Hoff
Pfarrer-Palm-Straße 17
D-53639 Königswinter
Tel. +49 2244 7106 mail: hansonhoff@proxxl.com

**CONSULTING ENGINEERS
MEKONG LTD**
www.kl-contract.com

| NAME | DATE |
|------------------------|----------|
| Prep. DAK | 10.03.07 |
| Check. REI | 16.03.07 |
| Chief.Eng. | |
| Pr. Mgr. | |
| SUPERSEDED BY DWG. No. | |

**WORKSHOP (B32)
FLOOR PLAN**

| PROJECT No. | ORIG. SIZE | ORIG. SCALE | DRAWING No. | REV. |
|-------------|------------|-------------|-------------|------|
| 602 | A0 | 1:20 | D-B32-AT-01 | |



Floor Plan

PEN: ASGMENTS: BEEBIA-05, ZIYELLOW-05, ZIGREEN-05, AUCYAN-07, SIBLUE-10, 6PAGEMENTA-14, 7PWHITE-18, 8PAGREY-10-10