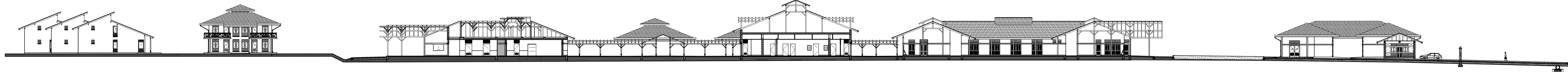
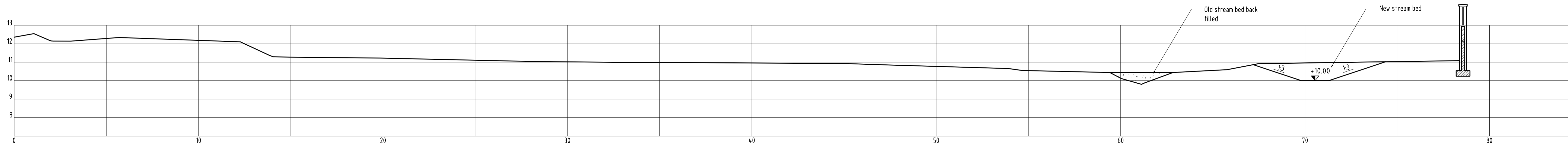


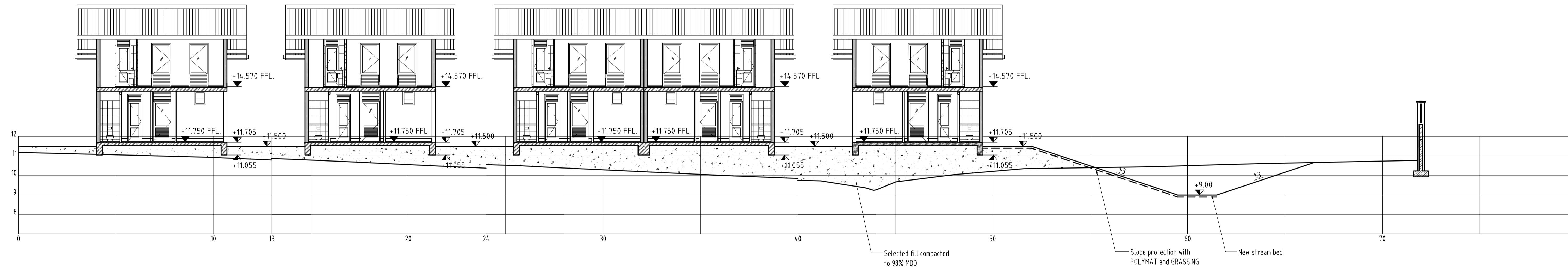
LONGITUDINAL SECTION D-D SCALE A



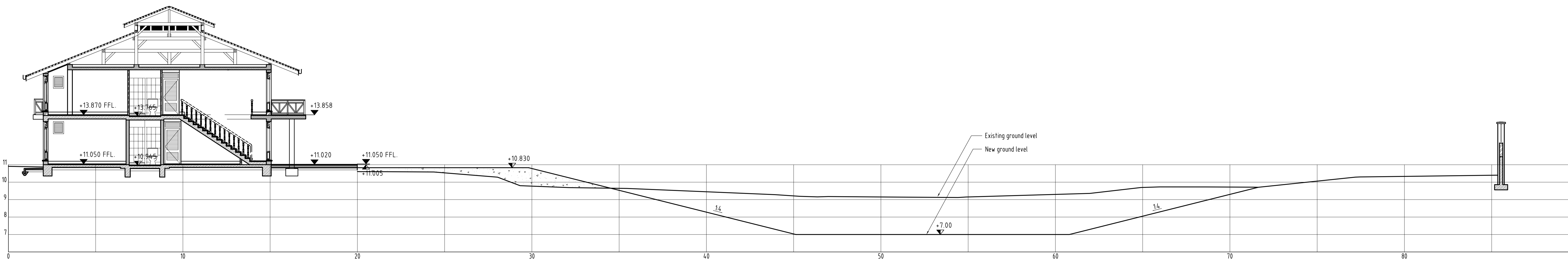
SECTION A-A SCALE B



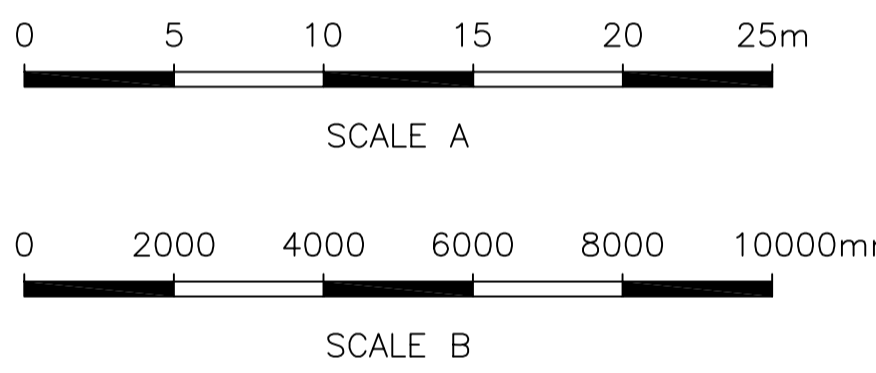
SECTION B-B SCALE B



SECTION C-C SCALE B



AS-BUILT DRAWING



DOCUMENT No.	DESCRIPTION

No.	CHECK	APPR	DATE	DESCRIPTION

SONJA KILL
MEMORIAL HOSPITAL FOR CHILDREN
KAMPOT CAMBODIA

Architect: Hans Haff
Pfarrer-Palm-Straße 17
D-53639 Königswinter
Tel. +49 2244 7108 mail: hannahoffarchitect@gmx.de

CONSULTING ENGINEERS
MEKONG LTD
www.li-consult.com

NAME	DATE
Prep. HMR	15.02.08
Check RE	15.02.08
Chief Eng.	
P.Mgr.	

SUPERSEDED BY DWG. No.:

PROJECT No.	ORIG. SIZE	ORIG. SCALE	DRAWING No.	REV.
602	A1+380	1:100	D-00-AT-03	

ARCHITECTURAL
MASTER PLAN
SECTIONS